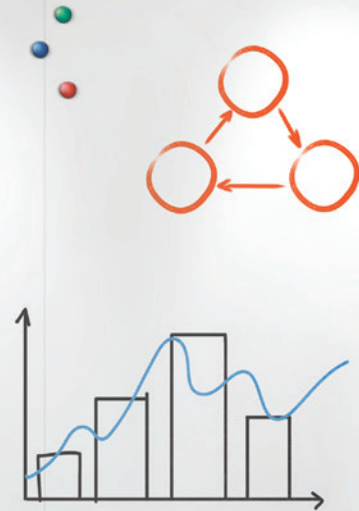
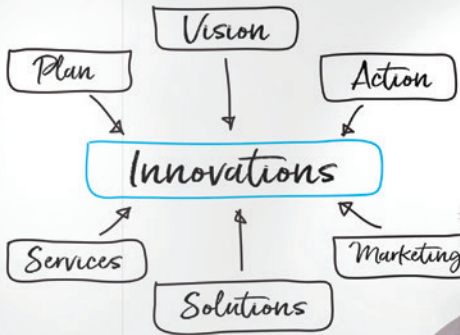


# WALLS THAT TALK

Your wall-to-wall solution.



Your wall as a

# WHITEBOARD

## Porcelain

Add an ideal writing surface to your space with large porcelain wall mounted whiteboards. They're easy to clean, super durable, and even magnetic for displaying documents and drawings.



## OUTSIDE TRIM OPTIONS

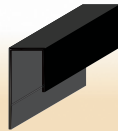
203



Anodized aluminum



White



Black

503



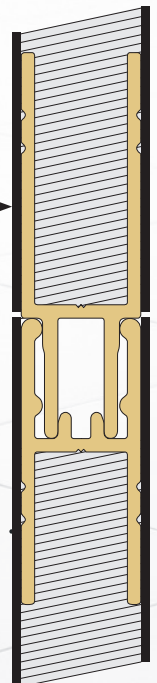
Anodized aluminum only

## MECHANICAL JOINTS

Panels have a mechanical joint so you can mount as many as you want to create a whiteboard that's just the right width for your wall. Joints are concealed under the porcelain to create a seamless writing surface—no need to even lift your marker.



Board surface

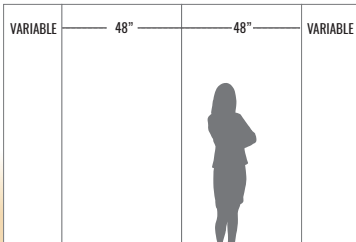




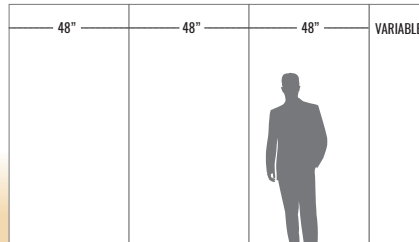
## ASSEMBLY OPTIONS

Wall panels come in standard sizes up to 48 in. wide. If they have to be cut to fit the length of the wall, the cuts are made at either end so that any imperfections or saw marks are hidden by the trim.

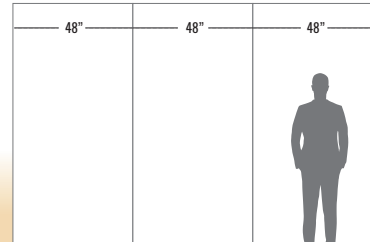
Full wall, symmetrical assembly



Full wall, asymmetrical assembly



Partial wall (no cuts)



**Magnetic black acrylic holder**

Depth: 4 1/4 in. (105 mm)  
Width: 8 in. (203 mm)



**MAXIMUM PANEL DIMENSIONS:** 120 in. x 48 in. (3,050 mm x 1,220 mm)

Your wall as a

# GLASSBOARD



## GLASSBOARD ACCESSORIES

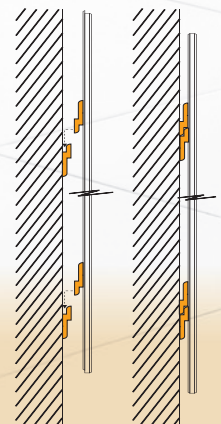


**Magnetic pawns**  
7/8 in. (22 mm)  
Available in black or white



**Magnetic tray**  
Length: 12 in. (305 mm)

## Z-BAR INSTALLATION





## SLEEK AND STYLISH

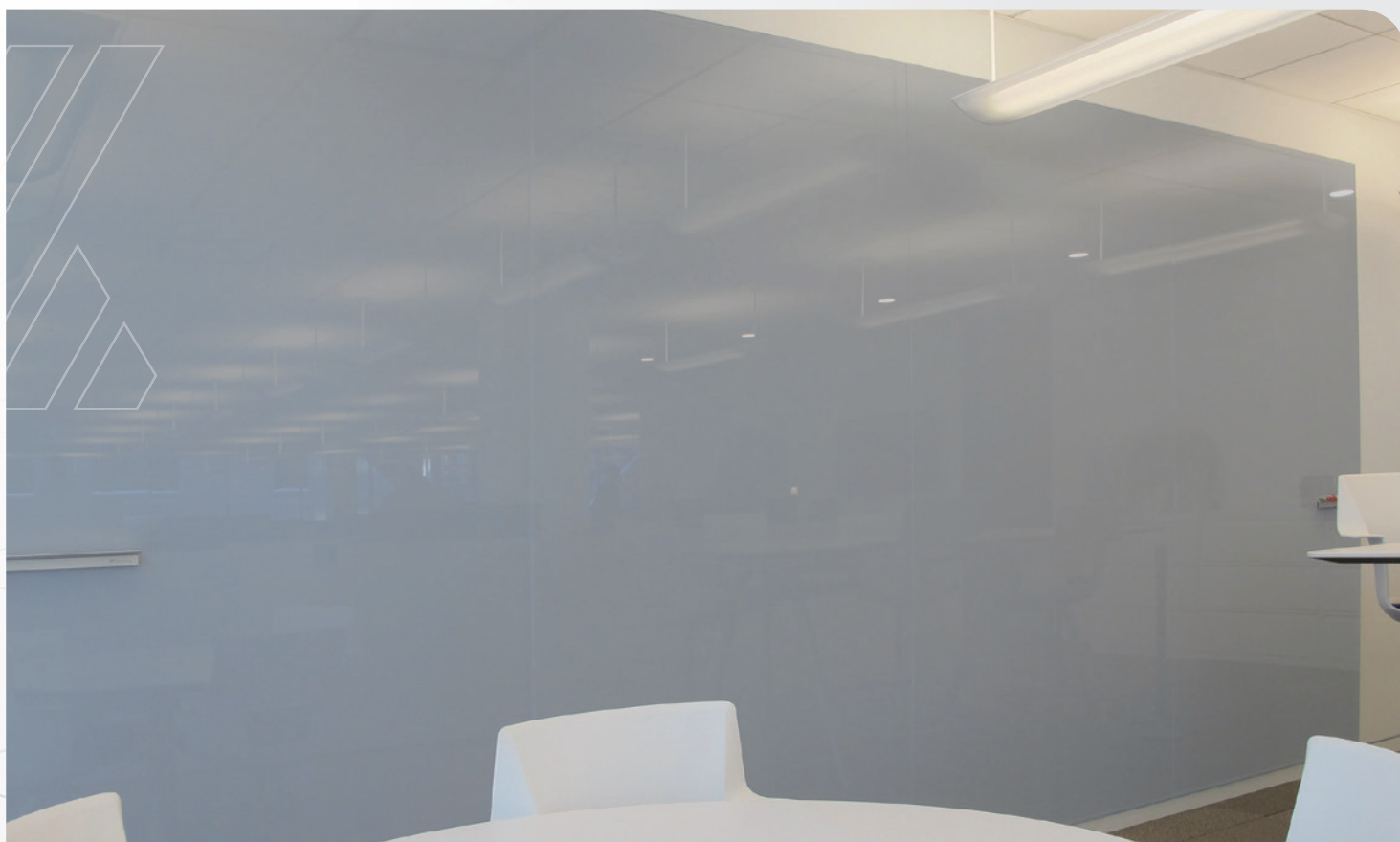
Add a touch of class to your space with multiple adjacent glassboards to create a writing wall with a polished, professional look. Our Crystal quality (low iron) tempered safety glass of 6mm thick offers unparalleled clarity.



## ADD SOME COLOUR!

Glass panels come in classic whiteboard white, but you can also choose a different colour to match your decor. Simply give us the paint brand and colour number and we'll take care of the rest. We provide a colour sample for your approval to ensure everything turns out just the way you envisioned.

*Pictured below: Backpainted glass using Benjamin Moore colour 2132-50 (Pilgrim Haze)*



**MAXIMUM PANEL DIMENSIONS:** 96 in. x 48 in. (2,440 mm x 1,220 mm)

Your wall as a

# SLIDING BOARD

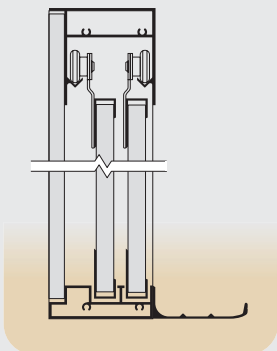


## FOR SMALLER SPACES

Need a bigger writing surface than what your space can accommodate? Our horizontal sliding panels are the solution. You can double or even triple valuable wall space with panels that glide easily on a nylon roller track system.

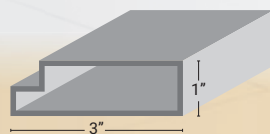


### CROSS-SECTION

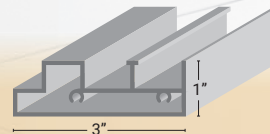


### TRIM OPTIONS

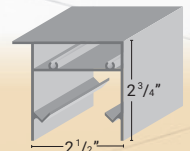
960 - Side framing



966 - Lower track



967 - Upper track





Your wall as a

# DISPLAY BOARD

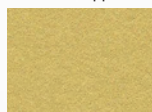
## SHOW OFF YOUR STUFF!

Turn your wall into a giant bulletin board and put your plans, strategies, and documents on display. With 15 colours to choose from, you'll find just the right shade, whether you're looking to add a pop of colour or for something more neutral.

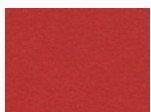


## AVAILABLE COLOURS \*

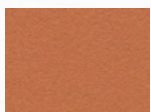
**2212**  
Fresh Pineapple



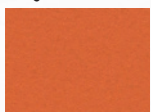
**2210**  
Hot Salsa



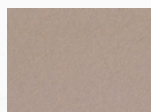
**2207**  
Cinnamon Bark



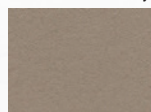
**2211**  
Tangerine Zest



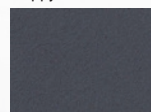
**2187**  
Brown Rice



**2208**  
Muschroom Medley

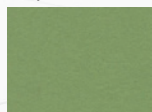


**2204**  
Poppy Seed



\* Always ask for a physical colour sample before making your selection.

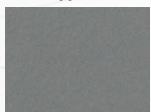
**2213**  
Baby Lettuce



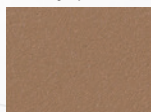
**2214**  
Blue Berry



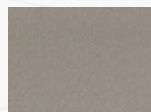
**2162**  
Duck Egg



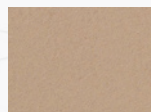
**2166**  
Nutmeg Spice



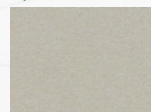
**2182**  
Potato Skin



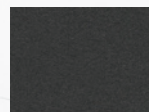
**2186**  
Blanched Almond



**2206**  
Oyster Shell

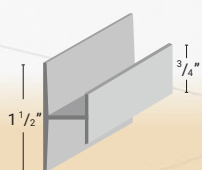


**2209**  
Black Olive

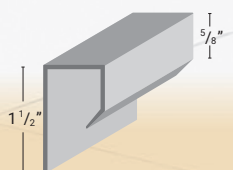


## TRIM OPTIONS

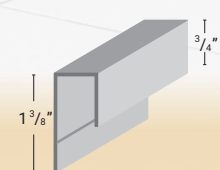
102C - Divider



503 - Outside moulding



203 - Outside moulding



**MAXIMUM PANEL DIMENSIONS:** 96 in. x 48 in. (2,440 mm x 1,220 mm)



**Customer service**

**Technical support**

**Measuring**

**Installation**

CBBC

30, Montée des Bouleaux,  
Saint-Constant, (Quebec), Canada  
J5A 1B6  
Phone: 450 632.1660  
Fax: 450 632.5449

[info@cctn.com](mailto:info@cctn.com)  
[cctn.com](http://cctn.com)



CANADIAN BLACKBOARD COMPANY LTD